

STRIKE THE ORIGINAL MATCH
TERMITES IN YOUR TROTH
EPHESIANS 5:13–21



The Heart of the Matter

It is a proven fact that termites destroy more structures each year than fire does. Incredible as it may seem, tiny, silent, unnoticed insects create greater havoc than lashing, brutal, destructive flames—but it's always the fire that makes the headlines, not the termites. This is also true in a marriage. Most homes are not destroyed because of enormous, headline-making fires . . . but because of the quiet, gnawing, unnoticed, irritating *insects* that eat away at the troth, or trust, in a relationship year after year. This message exposes five of the more common species of relational termites that weaken and ruin the inner walls of a home.



Discovering the Way

1. Inspection Report (Song of Solomon 2:14–15)

We must make it our habit to examine our marriages, ensuring that they are protected from destruction.

2. Destructive Termites (Ephesians 5:13–21)

Paul outlined five common “termites” that work quietly to destroy marriages: the confused termite, the busy termite, the dull termite, the running termite, and the stubborn termite.

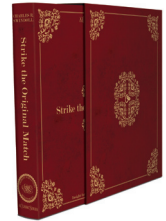


Starting Your Journey

Overcoming the pests that threaten our marriages involves honesty about their presence, a willingness to sacrifice for their removal, and the discipline to start immediately.

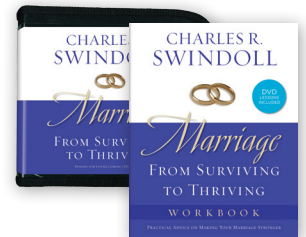


Tools for Digging Deeper



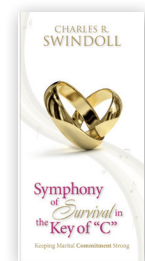
Strike the Original Match

by Charles R. Swindoll
CD series of 14 CDs



Marriage: From Surviving to Thriving

by Charles R. Swindoll
CD series of 8 CDs, workbook,
and DVD



Symphony of Survival in the Key of “C”:

Keeping Marital Commitment Strong

by Charles R. Swindoll
booklet

For related resources, please call:

USA 1-800-772-8888
AUSTRALIA 1300 467 444
CANADA 1-800-663-7639
UK 0800 787 9364

Or visit www.insight.org
or www.insightworld.org



Original outline copyright © 1975 and Message Mate copyright © 2012 by Charles R. Swindoll, Inc.
All rights are reserved worldwide. Duplication of copyrighted material for commercial use is strictly prohibited.
Committed to Excellence in Communicating Biblical Truth and Its Application