

# STRIKE THE ORIGINAL MATCH

LET'S CONSULT THE ARCHITECT  
GENESIS 2:18–25; PROVERBS 24:3–4



## The Heart of the Matter

When we think of institutions, we often think of places where delinquent, defective, or dependent people need help and a place to stay away from society. This could well describe the institution of marriage today—an arrangement to pair together delinquent, defective, and dependent people, not for a lifetime but merely for a time. For many marriages, this definition is all too true. But it doesn't have to describe your marriage. The institution of marriage has fallen on hard times—divorce rates are soaring, men and women are testing the marriage waters by living together first, to say nothing about society's attempts to redefine marriage to include same-sex couples. But marriage is a divinely designed institution, and if marriage is to thrive in an increasingly hostile culture, then we must first consult the architect of marriage . . . God.



## Discovering the Way

### 1. Introduction to the Series

This series on marriage is most applicable for those already married or soon to be married; however, because our study will focus on the Bible, it is practical for anyone—married or not.

### 2. Statement of the Need

Why a series on marriage? Marriages are hurting. Homes are suffering. Families are fracturing.

### 3. Observations of Scripture (Genesis 2:18–25 and Proverbs 24:3–4)

God created men and women in His image for the purpose of marriage, which can only be built on the divine foundation of wisdom, understanding, and knowledge.



## Starting Your Journey

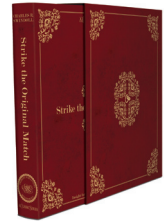
Three applications for the home emerge from this study. The time to start is *now*. The method to follow is *God's*. And the person to change is *you*.



Original outline copyright © 1975 and Message Mate copyright © 2012 by Charles R. Swindoll, Inc.  
All rights are reserved worldwide. Duplication of copyrighted material for commercial use is strictly prohibited.  
*Committed to Excellence in Communicating Biblical Truth and Its Application*

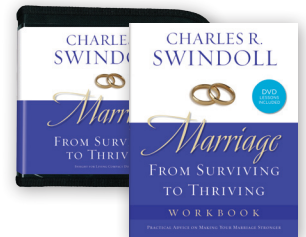


## Tools for Digging Deeper



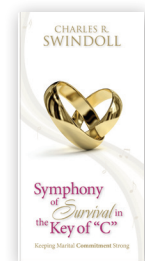
### Strike the Original Match

by Charles R. Swindoll  
CD series of 14 CDs



### Marriage: From Surviving to Thriving

by Charles R. Swindoll  
CD series of 8 CDs, workbook,  
and DVD



### Symphony of Survival in the Key of "C":

### Keeping Marital Commitment Strong

by Charles R. Swindoll  
booklet

For related resources, please call:  
USA 1-800-772-8888  
AUSTRALIA 1300 467 444  
CANADA 1-800-663-7639  
UK 0800 787 9364  
Or visit [www.insight.org](http://www.insight.org)  
or [www.insightworld.org](http://www.insightworld.org)