

STRIKE THE ORIGINAL MATCH  
LET'S REPAIR THE FOUNDATION  
GENESIS 2:18-25



### The Heart of the Matter

Damage to a marriage can begin even before the vows. Among the greatest threats to a new union are the young bride and groom's thoughts about what life with a new spouse will be like. Expectations often lead to broken dreams, as invariably, young couples fall into the trap of looking forward to a non-existent reality. On the doorstep of sealing their marriage bond, many people anticipate that after a few years of hard work and perseverance, they will settle into ideal marriages. However, there is no ideal marriage this side of sin. Instead, marriage promises a lifetime of two people striving together for maturity. Without this realistic perspective, a couple's view of the foundation of marriage becomes fractured and in need of repair.



### Discovering the Way

#### 1. The One and Only Ideal Marriage (Genesis 2:18-23)

Adam and Eve had the only ideal marriage, because of the unique way they came together in Eden before sin entered the world.

#### 2. The Three Principles of a Realistic Marriage (2:24-25)

To make a true marriage, the man and woman will sever themselves from their parents, remain with each other permanently, and accept each other unconditionally.



### Starting Your Journey

In any marriage, God doesn't expect perfection, though He does expect appropriation. And while you can appropriate the lessons of marriage on your own, it works better when done together with your spouse.

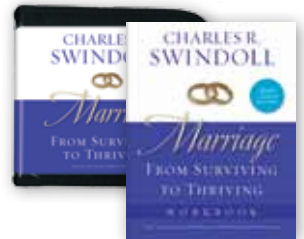


### Tools for Digging Deeper



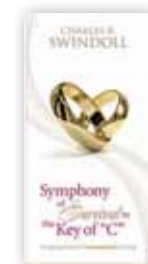
#### Strike the Original Match

by Charles R. Swindoll  
CD series of 14 CDs



#### Marriage: From Surviving to Thriving

by Charles R. Swindoll  
CD series of 8 CDs, workbook, and DVD



#### Symphony of Survival in the Key of "C":

#### Keeping Marital Commitment Strong

by Charles R. Swindoll  
booklet

To order any of these related resources, call  
0800-787-9364  
or visit  
[www.insightforliving.org.uk](http://www.insightforliving.org.uk)